

Arthroscopy Irrigation Sets

DESCRIPTION

m|devices Arthroscopy Irrigation Sets are available with either a stepped connector and silicone tubing adaptor or with a Male Luer Lock (MLL) connector. They have a double spike Y-Site configuration with a manual hand pump. Both versions are medical grade PVC.

FEATURES & BENEFITS

- Soft material
- Double spike configuration
- Manual hand pump
- Available with different end connectors
- 3 Click clamps

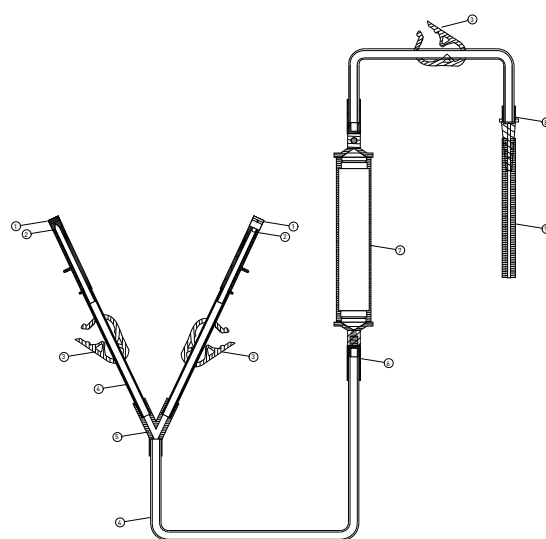
PRODUCT DATA

- Tubing length: 220cm
- Tubing inner diameter: 4.8mm
- Tubing outer diameter: 6.8mm
- Priming volume: UR010000 90.0mL
- Priming volume: UR010002 74.0mL
- Flow rate (80cm): 22L/hr
- Material: PVC
- DEHP NO = Not detected (Result less than the Method Detection Limit EN 14372)
- ARTG Number: 314960
- Shelf life: 5 Years

STANDARDS

- EN ISO 10993-5:2009 Biological evaluation of medical devices - Tests for in vitro cytotoxicity.
- EN ISO 10993-7:2008 Biological evaluation of medical devices - Ethylene oxide sterilisation residuals
- EN ISO 14971:2012 Application of Risk Management.

PRODUCT DIAGRAM



| ITEM | DESCRIPTION | 5 | Y Connector |
|------|-------------|---|-------------------|
| 1 | Cover | 6 | Tube Connector |
| 2 | Spike | 7 | Pump |
| 3 | Click Clamp | 8 | Stepped Connector |
| 4 | Tube | 9 | Silicone Tube |

Arthroscopy Irrigation Set

| RE-ORDER | DESCRIPTION | TOTAL LENGTH | CARTON/QTY |
|------------|-------------------------------------|--------------|------------|
| IR010000 | Arthroscopy Irrigation Set | 265cm | 30 |
| IR010000NS | Arthroscopy Irrigation Set | 265cm | 30 |
| IR010002 | Arthroscopy Irrigation Set with MLL | 260cm | 30 |